



Frederick Tower & Class D Airspace

QUICK REFERENCE CARD

airsafetyinstitute.org/fdktower

CLASS D REQUIREMENTS

- Equipment: Two-way radio
- VFR: Establish and maintain two-way communication with ATC
- IFR: ATC clearance
- Visibility: 3 statute miles
- Cloud clearance: 500' below, 1000' above, 2000' horizontal

RADIO CALLS

- Who you're calling
- Who you are
- Where you are
- What you want
- Weather (e.g., AWOS "one-minute weather" or ATIS "information Bravo")



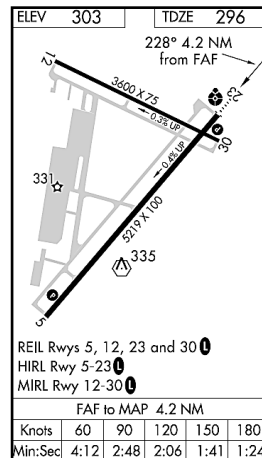
airsafetyinstitute.org/radiocomm

FREQUENCIES

ATIS/AWOS	124.875	
Clearance Del.	121.975	(126.9 when tower is closed)
Ground	121.975	
Tower/CTAF	132.400	(CTAF/pilot-controlled lighting when tower closed)
Potomac Approach	125.525	
Leesburg Radio	Transmit 122.1, listen 109.0 FDK VOR	
I-FDK Localizer	110.300	
FDK VOR	109.000	
Landmark Aviation	130.275	

TOWER HOURS OF OPERATION

0700-2100 local



NOT FOR NAVIGATION

REFER TO CURRENT A/FD AND CHARTS FOR ACTUAL FLIGHT PLANNING AND NAVIGATION PURPOSES

For use in chart or flight planning ring binders, cut along dashed lines